

HAMILTON'S

ILLUSTRATED
AUTO
ROAD MAP

FIFTH EDITION



MISSION BELLS

CALIFORNIA TOUR BOOK

SHOWING ACTUAL PHOTOS OF THE LOCATION OF TURNS,
FORKS, CROSSROADS, LANDMARKS, HOTELS, RESORTS,
INNS, GARAGES AND POINTS OF INTEREST, WITH
MUCH SUPPLEMENTARY INFORMATION
TO MOTORIST AND TOURIST

COPYRIGHT BY E. E. HAMILTON

PRICE \$2.00

HOME F 3489



372 WILCOX BLDG., COR. 2ND & SPRING STS. LOS ANGELES, CAL.

PRINTED BY
FRANK E. GARBUTT COMPANY
650-652 SO. OLIVE STREET
LOS ANGELES, CAL.

NOTE



This, the Fifth Edition of Hamilton's Automobile Road Map, contains measured and pictured road maps from Tia Juana, Mexico, on the south, to Klamath Falls, Oregon, on the north, and Reno and Carson City, Nevada, on the east.

In preparing this Fifth, the greatest and largest road map of its kind in the world, neither time nor money have been spared to add every possible new feature, including many thousands of miles of road hitherto unmapped.

Our aim is to give the touring public the best service, the best information and the best maps. With this end in view the policy that has brought our past success has been continued, in an effort to make the best use of the limited time at our disposal in compiling a map of such a vast territory.

Though the entire state is now entirely covered, including all the best main roads, and though nearly every hotel, garage, resort and point of interest is reached, the good work will go steadily along.

This book, some say, could hardly be improved upon, since it covers over 12,000 miles of country and visits Lake Tahoe, Mt. Shasta and Yosemite Valley.

However, we will constantly raise the standard and mileage, the arrangement and artistic qualities. Our aim is to give the touring public a guide book, built on accuracy and honesty, trusting thereby we will merit the continued support of our motorist friends.

All matter herein is fully copyrighted and any infringement either in idea or section, will be vigorously prosecuted.

Fifth Edition Copyrighted 1914 by
**HAMILTON'S ILLUSTRATED AUTO ROAD
MAP CO.**

372 Wilcox Bldg., Los Angeles, Cal.



SUGGESTIONS *for* AUTO TRIPS.



California! To those who have traveled widely and seen many things, this word stands for a great deal, indeed, nowhere in the world is there such another place, such a variety of climates and conditions; such beauties and contrasts of mountain, forest, plain, hill and desert.

Among motorists there is a growing desire to visit the odd and beautiful corners of this vast state and so we have written the following information, which will be found reliable and interesting.

LOS ANGELES TO SAN FRANCISCO INLAND ROUTE

FIVE DAYS—EASY RUNNING

This trip can be made faster, but much of the pleasure of the view is lost, to say nothing of some rough stretches and grades

Leave Los Angeles via the Broadway tunnel, good roads, proceed past the world's greatest pigeon farm out Avenue 20. Over a long stretch of smooth road to San Fernando, Map 18. One mile to the left is the historic mission, well worth a visit. Pass Sylmar Olive Ranch, the largest olive ranch in the world. On, up the grades to Newhall tunnel, the oil wells and the station of Saugus.

Here we branch to the right, Map 75, and climb up the grades of the San Francisquito Canyon. The road is good and there is a great many little fords, all with good bottoms. In winter there are times when they are pretty deep, but we will speed on up to Lake Elizabeth on the edge of the great lonely Mojave Desert, which spreads like a vast, silent emptiness, far, far away into the blue distance.

We turn towards Fairmont and climb into the mighty Tejon Pass, with its rocky roads, borax mines, grades and fords. Here is Lake Castac, Lebec station for lunch and the ruins of old Fort Tejon. What blood-curdling tales its walls could tell of the Indian days of long ago.

And beyond is the mouth of the canyon and Rose Station, and the great level plains that stretch far away to Bakersfield.

Evening brings us with good luck into that interesting commercial city, which, with its sister city, Kern, are the two greatest oil cities in California. Map 78.

The next morning we proceed to Tulare via Map 78, after a short spin to the oil fields, which are of great extent. Long level stretches of plain characterize the San Joaquin Valley, and at noon we find our way into Tulare, none the worse for plains, dust and mirages. From here we turn to Visalia, a pretty little town in a rich farming country; here we spend the day contemplating the distant snow-capped Mt. Whitney and enjoying the rustic countryland. Map 80.

On the third morning we proceed to Sultana, Dinuba, Reedley and Fowler, thriving little farming towns. Luncheon at Reedley and on to Fresno, where we find many and varied things of interest.

There are considerable things to see in Fresno, a beautiful city of wide streets and fine buildings, and we might linger here for a space. It is from Fresno that many motorists drive to Wawona, the south gate of the world-renowned Yosemite Valley, which is described elsewhere in this book.

SUGGESTIONS (Continued)

The next morning takes us over a lonely, long stretch of plains such as you read about, one of those endless kind, and only Los Banos, Dos Palos and Mendota, three wee little towns, to cheer us on the way. But they do the work well, and accommodations are all one could wish.

Then the long, winding hills and Pacheco Pass, Map 84. Suddenly the Santa Clara Valley is seen far below us, with its verdant fields, old farm houses, tall nodding trees and fields of bright hued flowers, that give the scene a matchless pastoral charm.

Beyond is Gilroy, long flat reaches of fine road, lots of little towns and then the metropolis of San Jose. Here are many fine buildings and points of interest, good hotels and garages, among them the beautiful Hotel Vendome and the Letcher Mission garage.

Mt. Hamilton and the Lick Observatory are nearby and a visit to them is something rare and unusual. We advise this trip. Map 118.

On the morning of the fifth day we proceed towards Oakland, passing many little towns. The roads are fine and the view is good. Hunter's Inn and the famous auto boulevard bring us into Oakland, past Lake Merritt and countless little interesting places. Map 86.

As we describe Oakland elsewhere, we will proceed to the mole, or the ferry at the foot of Broadway. From here we embark for San Francisco, paying 75 cents for the machine and 10 cents for each person.

Fifteen to thirty minutes lands us in San Francisco, that great city of the West. Description of its many attractions will be found elsewhere.

SAN FRANCISCO TO LOS ANGELES

Five Days, Easy Run

Leave San Francisco early, via Maps 96, 97, to San Mateo, Redwood City and Palo Alto. Near here is situated the great Leland Stanford, Jr., University; don't fail to visit the museum art gallery and many other exhibition rooms, all of which are very instructive.

Tearing ourselves away from its treasures we hum away to San Jose, Gilroy, San Juan Mission and Salinas, where we spend the night.

From here the road branches to Monterey, Del Monte and Carmel, which we describe elsewhere.

On the second day it is a long ride to King City, Soledad and Jolon, with its old San Antonio Mission, grapevine and little Dutton museum. Map 101.

Beyond is Bradley, from here make the detour up Indian Valley, it is always safe. There is a bad ford and sand on the short road and the best cars have been hopelessly mired. So advise following our map despite the words of wise heads.

At San Miguel is another mission alongside the road, and then Paso Robles, with its fine hotels. Here we spend the night and take a medicinal bath, whether we need it or not. Map 103.

On the third morning proceed to San Luis Obispo, that thriving city founded by the Franciscan padres. Their mission of San Luis de Tobosa still stands in the center of town. Map 104.

SUGGESTIONS (Continued)

On again through a hilly country, down the sea coast and we reach the celebrated El Pismo Inn, with its superb hostelry, fine beach and numerous attractions. It is at El Pismo on the wide hard beach that many automobile race-meets have been held. Map 104.

Then there is Arroyo Grande, a picturesque village, and a long ride over the hills to Santa Maria, modern and up-to-date. From here the country is flat and we roll merrily along to Orcutt, up some more grades and drop into the rich agricultural valley where reposes the city of Lompoc.

Lompoc is one of California's fast growing towns and offers many inducements to homeseekers and investors. Spend the night in this little city, and take a speed to Surf, by the ocean, a fine level road all the way. And some pretty sea-coast scenery, to say nothing of a distant lighthouse. Map 107.

On the fourth morning proceed to Mission Purisima and Mission Santa Ynez, Map 109. Both of these places are very old and historic.

From Mission Santa Ynez, via Map 106, proceed to the Gaviota Pass, with grades and some rough country. Then the Gaviota hills, for about thirty miles it is up and down, and in and out, until one wonders at the end. However, the roads are fair, the grades good, and the scenery the most magnificent, bringing us finally to that gem of coast cities, Santa Barbara.

Santa Barbara has many points of interest, which we mention elsewhere, and the night and several days may be well spent here.

Further on is Shephard's Inn and Stanley Park. The great Casitas Pass can be avoided by taking the Rincon road to Ventura and the Ventura Mission.

Then a long, pleasant ride into Los Angeles by choice of three roads. (Consult Index Map.) All of these roads are good and charming, the one via Simi, being the most favorable, all things considered.

LAKE COUNTY TOUR

Leave via Map 88, taking the first early morning ferry to Sausalito. We pass the military prison on Angel Island and thread our way amongst great ocean liners, barking tugs, launches and weather-beaten schooners, to finally bring up at the Sausalito side.

Passing through this little city we turn up the valley along the edge of San Pablo bay. On through the picturesque countryside with the pretty view up Mill Valley, towering Mt. Tamalpais and the Muir woods.

Turning over the drawbridge at Green Brae we climb the rolling hills. Each turn is a new panorama, a delightful bit of scenery that suggests the hills of old Vermont or New Hampshire.

Then there is San Rafael with its quiet streets and fine hotel. From San Rafael the road is a constant rolling affair going up and away into the peaceful hills, and through the tiny valleys, dotted with vineyards, orchards and farm houses.

Just a little beyond Ignacio, on the railroad which runs nearby, occurred one of the most fatal train wrecks in the history of California.

After a long ride we reach Petaluma, a busy little town in a rich farming country. But the roads are fine and so we leave Petaluma behind in the dust and slow down when Santa Rosa comes into view.

SUGGESTIONS (Continued)

Santa Rosa is a pretty little city. It was destroyed by the great earthquake of 1905 but has been rebuilt on substantial and modern lines. Santa Rosa is an old town and its name recalls the Franciscan padres, who established a mission here over 200 years ago. It was a city in the days of the dons long before there was a city in the middle west. This is a good place to spend the first night, accommodations are the best. Map 89.

The next morning we leave, via Map 89, for Healdsburg and Geyserville. Near the last town are the celebrated geysers and a trip to them is not amiss.

Beyond, the winding pleasant road leads on to Cloverdale (May 90), past the Oat Valley farm and over the Preston bridge. At Preston is located the northern State Reformatory, the other being at Whittier, Cal.

From here the country becomes more mountainous and rocky up, up, up, past great cliffs and along the high banks of the Russian river, till Pieta greets the view.

Here we turn over the toll road, which is a good road considering the grade. A lot of winding brings us to the toll house at the summit and then we drop over the divide and into the valley below, where Highland Springs is found.

Leaving the springs we continue on to Lakeport (Map 91), a pleasant little city on the shores of beautiful and picturesque Clear Lake. It is here that one may spend unlimited long hours, fishing, bathing, sailing, touring, resting. At every turn may be found summer resorts and mineral springs. There is Witter Springs, Skaggs Springs, Upper Lake, Bartletts Springs, Allens, Laurel Dells, Blue Lake, Glen Alpine, and many others.

But now to return to San Francisco by another route. This is highly picturesque and pleasant. Via Map 92 we reach Finley and can take a short jog to beautiful Soda Bay Springs on the lower end of Clear Lake.

Then to Kelseyville, and the road rambles away into the trackless forests of redwood, pine and cedar.

The road soon brings us to the spur to Adams Springs. This is a very pretentious place and the curative qualities of the water, along with the healthy climate, are a matter of concern to many of us.

From Adams Springs we wander through a pretty bit of mountain country wild and rugged, and then Middletown. This is a very old place, nestled away and forgotten by the world, just like some of the cities way back east.

Climbing more grades we reach Mt. St. Helena (Map 93), and then drop down one of the largest down grades the ordinary motorist could expect on a little pleasure jaunt. But it is a good road and at the bottom we find Calistoga.

Despite Calistoga's peculiar name, it has a good hotel and garage. From here we may make a side trip to the petrified forest, which is very interesting with its trees of solid stone.

Beyond here the road is elegant, flat, level and through a pretty farming and fruit raising country. St. Helena drifts by Rutherford and Yountville, with its Soldiers' Home, and Napa.

Here in Napa is located a good hotel and garage, where the night may be spent. Map 95.

Proceeding on Suscol avenue, the Napa Insane Asylum, a very large institution, will be seen on the left. The rest of the road, via Map 95, leads into Vallejo, where it is necessary to ship by boat to San Francisco.

Parties desiring to tour further, may run to Benecia, Port

SUGGESTIONS (Continued)

Costa, Berkeley and Oakland. This means to ferry twice, but varies the trip a trifle.

LOS ANGELES TO SAN DIEGO—COAST ROUTE

This trip is a delightful day's run along the shores of the Pacific Ocean. Start from Los Angeles via Map 12-12½ and follow the course to Whittier—a pretty little town in the foothills. Here are a number of places of interest, including the State Reformatory. Whittier we pass on to Fullerton, Anaheim, Orange, and Santa Ana, all very attractive little suburbs of the great southern metropolis of Los Angeles.

The road heads south and we find Mission San Juan Capistrano, a relic of the days of the Dons; this is well worth an inspection. Map 34. Then a long ride down the coast, wild, beautiful and lovely, it possesses a charm all its own. San Luis Rey Mission is next, also very old, and then the city of Oceanside, with its good accommodations. Here we may take a plunge, if desired. Map 35.

From Oceanside we follow the coast, Map 36, up and down to Del Mar and Stratford Inn, and off again to grades and Torrey Pines, one of the most picturesque automobile grades in the state. Then on a level plateau and a long grade down into La Jolla, quaint and clean, Pacific Beach and the city of San Diego, Map 37½.

The roads are good, a few bumps and some sand and grades, but the view is fine and the run is very popular.

TORREY PINES

This is a favorite ground, the view is beautiful and interesting. These pines are peculiar in that they grow on this one spot alone, being far remote from any other of the same species. Students are at a loss to account for their distribution here. Some are over a hundred years old and traces of others even older are apparent. A movement is now on foot to reserve this peak and adjacent country as a park.

POINT LOMA DRIVE

A day should easily be spent taking this in. Map 40 does the work. The road is one of the finest in the state and reaches Point Loma Theosophical Institute, and several beaches. Then one may visit the lighthouse and take a peep at Fort Rosecrans. While the view of San Diego and adjoining country, from the high promontory is one both commanding and impressive. It gives an idea of San Diego's wonderful natural location as a seaport.

LA JOLLA AND THE CAVES

Another supremely interesting place is La Jolla and the sea caverns. An easy trip, with hours to wander along the cliffs, the pebbled and rocky beaches, where the sea wrack hangs, shells abound, and queer rock loving creatures of the sea crawl into the crevices of the cliffs. Then there are the caves, a wonderland in themselves, they bring back memories of the blue grotto of Capri, of Norse legends and other fanciful things. Map 37 does the work.

LAKESIDE INN

This beautiful mountain resort with its beautiful hotel, grounds and famous automobile race course, must be seen. The roads are fine, the scenery diversified and charming. Map 39. Hamilton's reliable—of course.

The return trip can be made via the World's Drive, Maps 39, 39½, 37.

SUGGESTIONS (Continued)

LAKE CUYAMACA AND RAMONA'S COUNTRY

Few motorists realize the vast extent of country that lies back of San Diego, back of Lakeside, away up in the high pine forests and rocky cliffs of Capitan Grande, where Alpine, Descanso, Ramona, Santa Ysabel and a number of other little towns nestle high up among the mountains.

Sometimes during the winter there is snow up here, and it remains long on the high peaks, but at other times the roads are good. True there are some pretty rough places, some grades that go up, up, up, and make you hold your breath, but it is worth it.

The wild, rugged grandeur is surpassing, each town is a treat and it is an ideal country for camping.

Then there is Warner's ranch, in a big highland valley, the famous, historic Palingawa of the Indians. If you have ever read "Ramona," here you will find all the scenes, for this is Ramona's country.

Maps 66, 67, 68, 69, 70, 71, 72 will guide you through.

ABOUT SAN DIEGO

About San Diego itself, are many points of interest, the city park, the magnificent Normal school, Grant Hotel, Elks lodge, library, public buildings, yacht clubs, docks, churches and schools. Oftimes there are several warships or torpedo boats in the harbor, and the trip to them is not amiss.

MORRO ROCK

When in the region of Paso Robles, there is a nice little diversion in the trip to Morro Rock and Cayucos. There is not over much to see except new bits of hidden landscape, the pounding surf lines and the towering Morro rock which rises high out of the water like some great enchanted stone troll. However, though there is little habitation in this neighborhood, it is a jolly good trip. Map 112 will jolly you along.

NORDHOFF AND FOOTHILLS

The Ojai Valley has long been termed a gem for the peculiar beauty of its scenery. Not too large to be lost by the eye, it becomes charming. Then there is the Foothills Hotel, with its fine golf links and dear little Nordhoff, a quaint town nestling down in the valley.

Trout streams, orange groves, hot springs and good roads unite with excellent accommodations to make a run at once pleasing and easy. Maps 18, 19, 20, 21, 22½.

REDLANDS

Redlands is known afar, both for its beauty and climatic situation. Besides the road is excellent and diversified, offering a multitude of ever-changing vistas to the motor enthusiast.

There is the Highlands, Smiley Heights, Mentone and San Timeteo, where many fine views are obtained and a week may be easily spent here. Roads are good all the time. Maps 1 to 8.

TOPANGA CANYON

This is one of the diversions for Los Angeles motorists and is truly beautiful and just long enough to be a good day's ride. There are a number of resorts which add to the interest, and the long low coast line, the towering cliffs and receding hills possess a charm that is all their own. Truly nature in a poetic mood fashioned this bit of landscape, perhaps that accounts for the romantic young motorists speaking of it in such growing terms. Map 110 will see you through, allowing for punctures.

SUGGESTIONS (Continued)

ARROWHEAD HOT SPRINGS—SKYLAND AND PINECREST

This trip to three of the resorts in the San Bernardino range is a pleasing and never to be forgotten sight.

Map 7, and the desire, will see you through. Arrowhead Hot Springs is a place of many charms, including the path to Squirrel Inn and neighboring country.

Then Skyland and Pinecrest, these delightful places, come as a surprise to those who did not dream of the vast forest ranges that lie back of San Bernardino.

One must see to appreciate, and having seen, there is a desire to linger here in peace and beauty.

SAN PEDRO—LONG BEACH

Leave Los Angeles and proceed via Long Beach Boulevard. Map 31*.

This city affords endless attractions with its fine beach and magnificent hotels. It is indeed a fashionable watering place and much time could be idled away here.

But after luncheon we leave via Map 30 to Wilmington and Map 33* takes us winding in and out the bay to San Pedro.

San Pedro is now part of Los Angeles, and the great expenditures of the government and municipality are making its harbor one of the finest on the coast. Its rapid growth has been a matter of discussion.

But it is like all seaports, a mingling of tangled ropes, masts, docks, sails and the like.

Out Pacific avenue is Point Fermin with its big lighthouse, the pavilion, the stairs down the high cliffs to the rocky sea and the mournful notes of a whistling buoy.

LOS ANGELES TO VENICE, OCEAN PARK, SANTA MONICA—ONE DAY'S RUN

Another very popular run and extremely diversified consists of the fine boulevard to Venice. Start about 8 a. m. Fifteen miles of suburban homes and orchards bring us to Venice. Map 28.

Venice is the most famous beach on the Pacific Coast. It is the Atlantic City of the Pacific.

Here we can amuse ourselves in many ways. There is a great pier that extends far out into the sea. The ship hotel, Casino and dance pavilion are big structures. The Venice aquarium is the largest on the Pacific Coast and a wonderful exhibit in itself.

Proceed over the fine speedway to Ocean Park and Santa Monica, places whose fame is known afar.

Then via Map 26 reach the Soldiers' Home, Sawtelle and Colegrove, returning to Los Angeles via beautiful Westlake Park.

MOUNTAIN CIRCLE

To those who love mountains and twisting roads, beautiful panoramas and quaint little vistas of woodland, this trip is short and sweet. Leave about 9 o'clock, not too early or the clouds will obscure much of the view and the beauties of the mountain be hidden. Map 49 will take you through Tropic, Glendale and the gradual sloping country.

Winding, twisting and climbing up roads that are good and easy grades, we find ourselves at La Crescenta, the dearest little place with a fine hotel, where we may lunch and spend some time in this ideal location.

Returning via Map 17, we pass La Canada, and wind down to the Devil's Gate with its high bridge over a rocky chasm.

SUGGESTIONS (Continued)

Then Pasadena and Orange Grove avenue, down the finely paved street, with its palaces and broad lawns, where so many millionaires reside. We pass the famous Busch sunken gardens, open to visitors, and on down till we reach the Ostrich Farm, South Pasadena, Arroyo Seco and return to Los Angeles through Garvanza.

This run is not well known, but highly entertaining with the best of roads.

THE KITE-SHAPED TRACK

Leave Los Angeles, Map 1, and proceed to Pasadena, Monrovia and Claremont, through the miles of orange groves in the sunny valleys (Maps 2, 3, 4) to Cucamonga. Then over a vast vineyard with a good oiled road into San Bernardino. At San Bernardino luncheon and a side trip to Arrowhead, but we will speed on to Urvita Springs with its attractions and on to Colton and Riverside. Here we find the famous Blenwood Mission Inn and a beautiful town as well. Map 9.

Take a short spin up Rubidoux mountain, one of the sights of Southern California.

Then on out the famous Magnolia avenue, one of the finest streets in the world. Arlington and Corona are next, and a long pull through Santa Ana Canyon, Orange and pull into Los Angeles late.

This trip should be done in a week, though it is done in a day, but it must be done pretty lively at that. If this is your first trip over it, we advise at least a week seeing the sights thoroughly. Maps 10, 11, 12, 12*, Hamilton's reliable maps, of course.

STANLEY PARK AND SHEPARD'S INN

Heretofore we have spoken of trips through thriving country lands, busy cities, rugged mountains and gay pleasure places beside the sunlit seas.

But here is a trip for the lover of nature. To those who love the inviting shade of the mountain forest, the cool deep ravines, verdant dells and moss festooned trees surrounded with ferns and wild flowers, this trip will prove a delight.

And the rippling trout streams sing lullabys of the wilderness, in the deep blue canyons.

Stanley Park and Shephard's Inn, two cosy hostelries with accommodations of the highest class, will afford you every comfort while you roam about in these pleasant latitudes.

Maps 25, 24, 23, 22 and 73 will take you there—Hamilton's Maps, as usual.

TOUR TO EUREKA AND OREGON

To those who have the time, an adventurous nature and a faith in their car we advise a trip to Eureka, Humboldt county, Crescent City and Oregon.

This is a fine country for fishing, hunting and roughing it, but don't advise it unless you like wilderness and adventure. It is simply the air here, and remember also, it is a long way between garages, though gas and oil with good accommodations can be found readily.

Eureka is a fine coast city and well worth a visit, having good hotels and garages.

Beyond is a long, thrilling drive along the tops of high cliffs that overlook the ocean, this is termed the wildest, grandest and most awe-inspiring motor ride in the state. Try it.

In Del Norte county we find Crescent City and beyond is a rough road to Waldo, Oregon; however, can get over it without

SUGGESTIONS (Continued)

trouble and as mentioned before, adventure is in the air.

Maps 162 to 166 will see you through.

For further touring the following are easy good runs:

Laguna Beach—Quaint, picturesque—Maps 12, 34.

San Fernando Mission—Historic—Maps 12, 34.

Redondo Beach, Clifton—Don't miss them—Pretty ocean cities—Maps 29, 29½.

San Gabriel Mission—Map 14.

Sierra Madre—Map 2.

Orange County Park—For lovers—quiet—Map 61.

Murietta Hot Springs—Map 111.

Hemet, San Jacinto and Idylwild—Map 63.

MT. LOWE AND MT. WILSON

Two mountain trips out of Los Angeles and vicinity are the Mt. Lowe and Mt. Wilson trips. These must be made by rail and trail.

Going to Mt. Lowe is the greatest incline cable railway, famous the world over. Half way up is seen the Lowe Observatory, open to visitors, and further is Alpine Tavern, a fine mountain inn.

Going up Mt. Wilson is a beautiful trail, made on horseback. Many people walk, it is an easy climb, even old Warren making it in four hours up. On the summit is the Mt. Wilson Hotel and the Carnegie Astronomical Observatory, largest of its kind in the world.

"Where every songster from every land,
If feathered—is found there on hand."

Ten thousand sq.
feet of Avisties,
containing Birds
and Pets of all
Kinds.

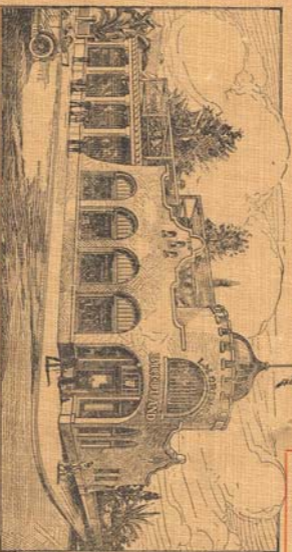
Birds of yellow, birds of red,
Brilliant markings, tufted heads;
Mocking, talking, singing ever,
Longing for their woodland—never.

Guarantee



Our guarantee is
good. We are here
to stay.

Every Parrot is
guaranteed to talk;
Canaries to sing
or warble.



America's great-
est Bird and Pet
Animal store.

Collections from
every part of the
Earth.

Largest stock of
Birds, cages, seeds
and remedies.

Aquarium goods



Visitors welcome

Branch Store

216 Mercantile Place
Main 2169 Home A 3632

LOS ANGELES, CALIFORNIA

Telephone Main 3451
L. M. GRIDER, Prop.

1301-1311 CENTRAL AVENUE

Trade Mark **"BIRDLAND"** Mark

Sample pages from

Fifth Edition of
[Hamilton's Illustrated Auto Road Map](#)

Published in 1914

Printed by Frank E. Garbutt Co,
Los Angeles, CA

Select pages from the section of the
book which offers
“Suggestions for auto trips”

Original book contains over 200 strip maps
and route information.

274 pages, hard bound, canvas covers

PDF conversion by Steve Haughey
steve@shaughey.com